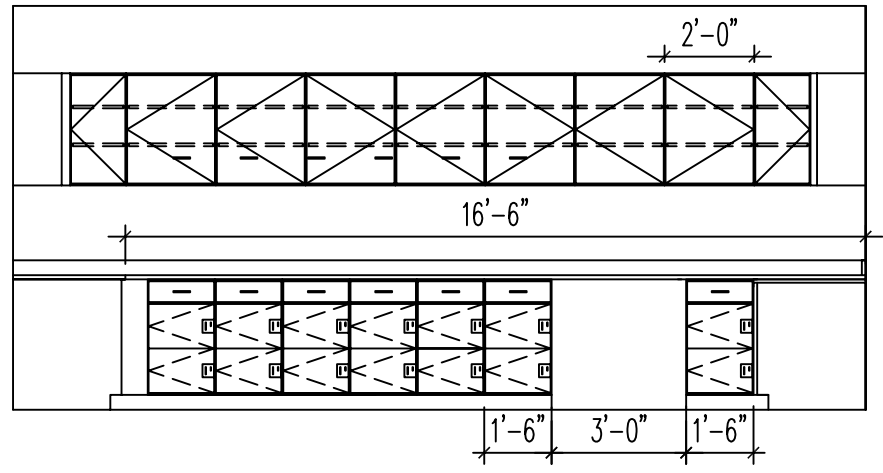
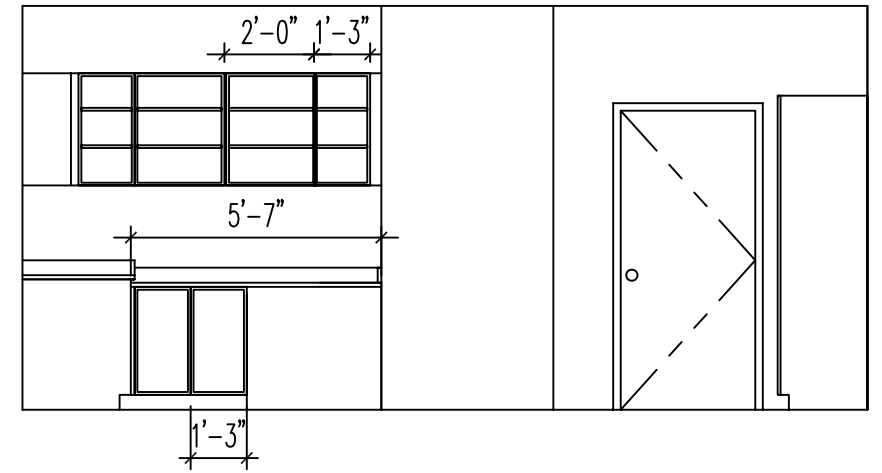


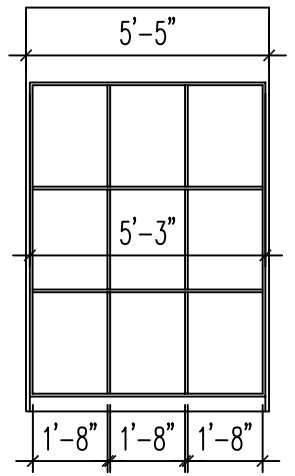
ELEVATION # 1 - STUDIO/CLASS 423
SCALE - 1/4" = 1'-0"



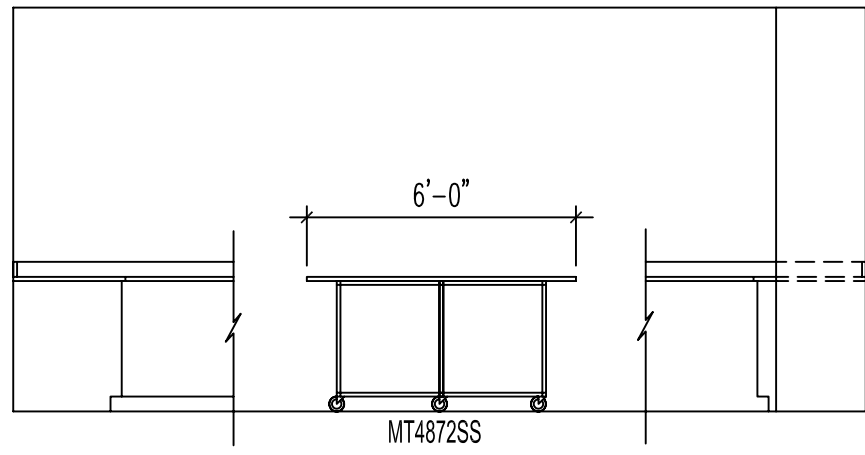
ELEVATION # 2 - STUDIO/CLASS 423
SCALE - 1/4" = 1'-0"



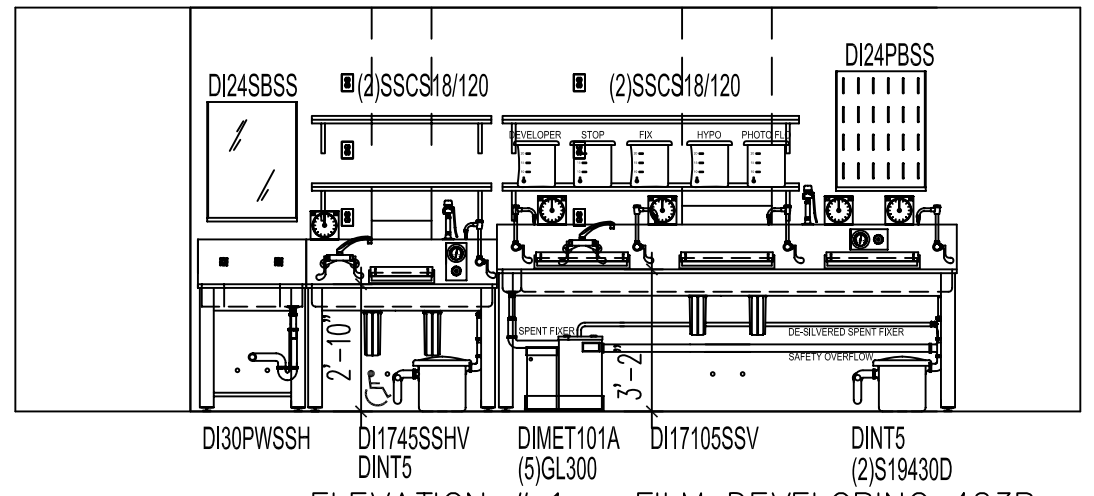
ELEVATION # 3 - STUDIO/CLASS 423
SCALE - 1/4" = 1'-0"



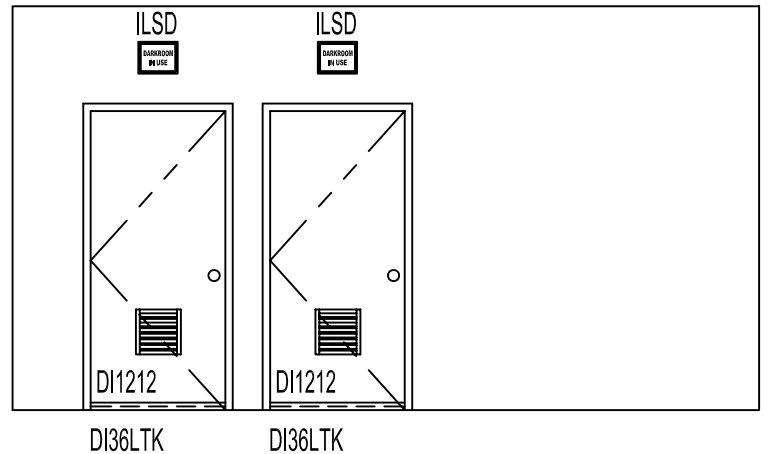
ELEVATION # 4 - STUDIO/CLASS 423
SCALE - 1/4" = 1'-0"



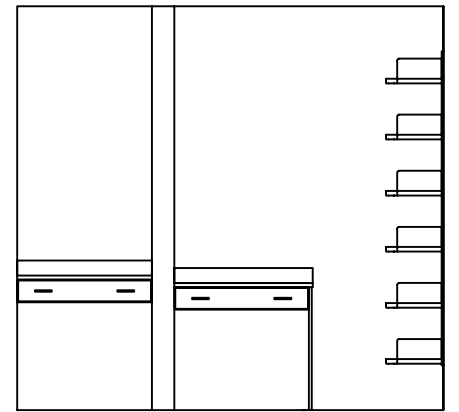
ELEVATION # 5 - STUDIO/CLASS 423
SCALE - 1/4" = 1'-0"



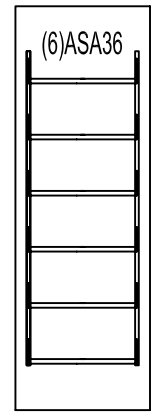
ELEVATION # 1 - FILM DEVELOPING 423B
SCALE - 1/4" = 1'-0"



ELEVATION # 2 - FILM DEVELOPING 423B
SCALE - 1/4" = 1'-0"



ELEVATION # 3 - FILM DEVELOPING 423B
SCALE - 1/4" = 1'-0"



ELEVATION # 4 - FILM DEVELOPING 423B
SCALE - 1/4" = 1'-0"

<p>Photographic Darkrooms • Designers • Suppliers • Installers</p> <p>193 Rocky Point Landing Road • Rocky Point • NY 11778</p>	APPROVED BY	REVISIONS			
	DATE	06/29/05	#	DATE	BY
	DRAWN BY	TA	1	072505	TA
	SCALE	1/2" = 1'-0"			
<p>ARCHITECT FHCM * S Architects</p> <p>PROJECT SIMMONS COLLEGE PHOTOGRAPHIC DARKROOM SUITE</p> <p>TITLE DESIGN DEVELOPMENT - REVISED ELEVATIONS</p>		<p>CONTRACTOR</p> <p>PROJECT # DI680</p> <p>DRAWING # PR-01</p> <p>SHEET 2 OF 4</p>			